

Hints to Exhibitors

Read the Regulations and Schedule **carefully** and be sure that the **exact** number of specimens required is staged.

Vegetable and fruit collections will be judged on presentation as well as the quality of the produce.

All vegetable roots should be **washed** not scrubbed.

Onions should not be skinned — remove loose skin only. As it is early in the season, leave the top growth showing.

Fruit, cucumber, tomatoes, peas, beans, etc, should have the stalk attached unless otherwise stated. Do not polish fruit. Don't overcrowd your exhibit.

Cover potatoes, cauliflowers and celery with thick paper until just before judging time — this will prevent greening.

“Other berries” includes loganberries, tayberries, etc.

Blooms may be dressed by removing a few damaged petals, but make sure that they are removed cleanly and rearrange other petals to fill any gaps.

Uniformity is most important. Do not put your exhibit out of balance by including an odd extra large specimen.

Cookery exhibits should never be warm when placed for judging and should always be covered with suitable film. Refer to the website <http://www.hempstead-essex.org.uk> for *suggested* recipes.

Check all bottles of preserves for sealing. All jars and bottles should be plain, well filled and perfectly clean, with labels mid-way. All preserves to be dated. Chutneys must be at least one year old.

Class 116 — the bread element can be bread, panino, ciabata, naan, etc.

**Please leave yourself plenty of time to
enter all of your exhibits**



Annual Show 2010 Schedule of Classes



**Saturday 10th July 2010
At Hempstead Village Hall, 2.30pm**



Hempstead & District Gardeners' Club Annual Show 2010

Schedule of Classes

The Harding Cup — for the overall winner in vegetable, salad and fruit classes

The Ken Jones Cup — for the gentleman member obtaining the most points

The President's Cup — for the lady member obtaining the most points

The Margaret Lambkin Cup — for the best child's handwriting, taking age into account

The Jean Goff Novice Award — for any member who has not previously won any cup at this show

All classes are open to all ages except the children-specific classes 101+

Vegetables — Sidney Haylock Cup (Classes 1–15)

- | | |
|-----------------------------------|--|
| 1. 3 potatoes (any one variety) | 9. 5 onions (any one variety) |
| 2. 3 beetroot | 10. 5 shallots (any one variety) |
| 3. 5 carrots (any one variety) | 11. 1 cauliflower (any variety) |
| 4. 1 cabbage (any variety) | 12. A collection of 5 different vegetables |
| 5. 3 courgettes (any variety) | 13. A collection of 5 different cut herbs |
| 6. 5 pods of broad beans | 14. Any other vegetable |
| 7. 5 french beans or runner beans | 15. The heaviest potato |
| 8. 5 pods of peas or mangetout | |

Salads — Salad Cup (Classes 16–21)

- | | |
|---------------------------------------|------------------------------|
| 16. 5 salad onions (any one variety) | 19. 5 tomatoes (any variety) |
| 17. 1 lettuce (any variety) | 20. 1 cucumber (any variety) |
| 18. 1 bunch of radishes (any variety) | 21. Any other salad item |

Fruit — Fruit Cup (Classes 22–27)

- | | |
|--|---|
| 22. A plate of 5 gooseberries, no stalks | 25. A plate of 5 strawberries, with stalks |
| 23. A plate of 10 raspberries, with stalks | 26. A plate of 5 other berries, with stalks |
| 24. A plate of 5 strings of currants | 27. A collection of 4 varieties of fruit |

Flowers — Thesiger Rose Bowl (Classes 28–30), Milford Haven Cup (Classes 31–41)

- | | |
|---|---|
| 28. Roses — vase of 3 blooms, one or more varieties | 36. A flowering pot plant |
| 29. Roses — 1 bloom in a vase | 37. Vase of hot coloured flowers |
| 30. Roses — 1 spray of a floribunda rose | 38. Vase of 3 varieties of cut flowers, judged on quality of blooms |
| 31. Sweet peas — vase of 5 stems, no foliage | 39. Cut flowers judged on colour coordination and quality |
| 32. Flowering shrub — one single spray | 40. Something you have grown for the first time — Members' only class |
| 33. A single dahlia | 41. A hanging basket (any size) |
| 34. Clematis — 3 flowers, present to suit shape | |
| 35. Pelargonium in a pot (max. 225mm wide) | |

Flower Arrangements — The Colonel Smith Award (Classes 42–44)

- | | |
|---|---|
| 42. A white arrangement (max 450 x 450mm) | 44. A celebration decoration to hang on your front door |
| 43. A small posy | |

Cookery & Crafts — The Domestic Trophy (Classes 45–61)

- | | |
|---|--|
| 45. Plain jar of soft fruit jam, wax disc and cellophane top | 58. A crochet, knit, lace or sewn item, by hand ^Δ |
| 46. Plain jar of chutney | 59. A metal, wire or wood item ^Δ |
| 47. Plain jar of jelly | 60. A drawing or painting, framed or unframed. Subject: "Light and Shade" ^Δ |
| 48. Marmalade | 61. A photograph, b/w or colour, not larger than 250 x 200mm. Subject: "Sunlight" ^Δ |
| 49. A handmade Farmhouse white loaf | 62. 5 chocolate brownies (gentlemen only) |
| 50. A vegetable samosa | |
| 51. A sausage lattice | |
| 52. A crème brûlée | |
| 53. 5 Florentines | * These drinks must be less than 2 years old and show date |
| 54. A carrot cake | ^Δ These items must be new this year |
| 55. Any homemade drink, non-alcoholic* | |
| 56. Any homemade drink, alcoholic, wine type, with small glass* | |
| 57. Any homemade drink, alcoholic, spirit type, with small glass* | |

NB: Please cover entries for classes 49–57 inclusive plus 62 with a cling film type material

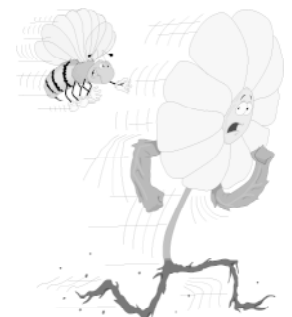
Children Aged 8 and Under — Sue Walker Cup (Classes 101–111)

- | | |
|--|--|
| 101. A picture of a dinosaur (in any medium) | 106. Make a mobile to hang in your bedroom |
| 102. Grow a pot of nasturtiums, max 225mm wide | 107. Garden on a plate, max 300mm wide |
| 103. Write a one page story about an animal | 108. Make 4 decorated biscuits |
| 104. Make an edible house | 109. Make a finger puppet |
| 105. A flower arrangement in red and green, max 300mm tall | 110. Handwriting (6 years and under)* |
| | 111. Handwriting (7 and 8 years)* |

Children Aged 9 to 11 — June Jones Cup (Classes 115–121)

- | |
|---|
| 115. Artwork for the cover of the 2011 Show Schedule |
| 116. Make a bread-based snack with imaginative filling (make both elements and label entry) |
| 117. Decorate a birthday cake |
| 118. Something you have made this year |

Suggested recipes and the handwriting texts are available from the Village website (<http://www.hempstead-essex.org.uk>) or from the contacts shown on the entry form



Show Information and Regulations

In order to win a cup you must be a member of the Club.

There are 14 cups to be won, and you win a Cup by amassing the greatest number of points in a group of classes under a Cup heading such as 'The Fruit Cup'. Enter as many or as few classes as you wish. Cups for each section are shown at the head of each class section.

The Village Hall will be open from 8am on Saturday 10th July for the registration and staging of entries.

All entries must be presented in the Hall with a completed entry form and entry fees by 10.15am. **No Late Entries Can Be Allowed**

No entries may be removed before 4pm. All entries must be removed by 5pm.

Everyone must leave the Hall by 10.45am, except for Show Officials, to enable judging to commence on time.

Cost of entries — Adults 10p per entry, Children free.

A child's entry must be submitted on a separate form and not included on a parent's form. Children's entry forms **must** state age, which will be shown on exhibit cards.

All entries must have been grown, made or produced within the past twelve months on the property or allotment of the Exhibitor, except for Flower Arrangement Classes (42–44) and Photography classes. Blooms and foliage for the Flower Arrangement classes may be from any source.

Prize cards will be awarded at the discretion of the Judge and Show committee.

The Judges' Decision Is Final.

Cups will be awarded on a points system:

3 points for a First

2 points for a Second

1 point for a Third

Winners of cups are responsible for having the cups engraved with their name and the year if they wish. The Gardeners' Club will provide new plates when required.

An entry form is included with this Schedule. Extra forms may be obtained from the contacts shown below.

Contacts: Diana Frost (599771), Brian Ray (599728)

